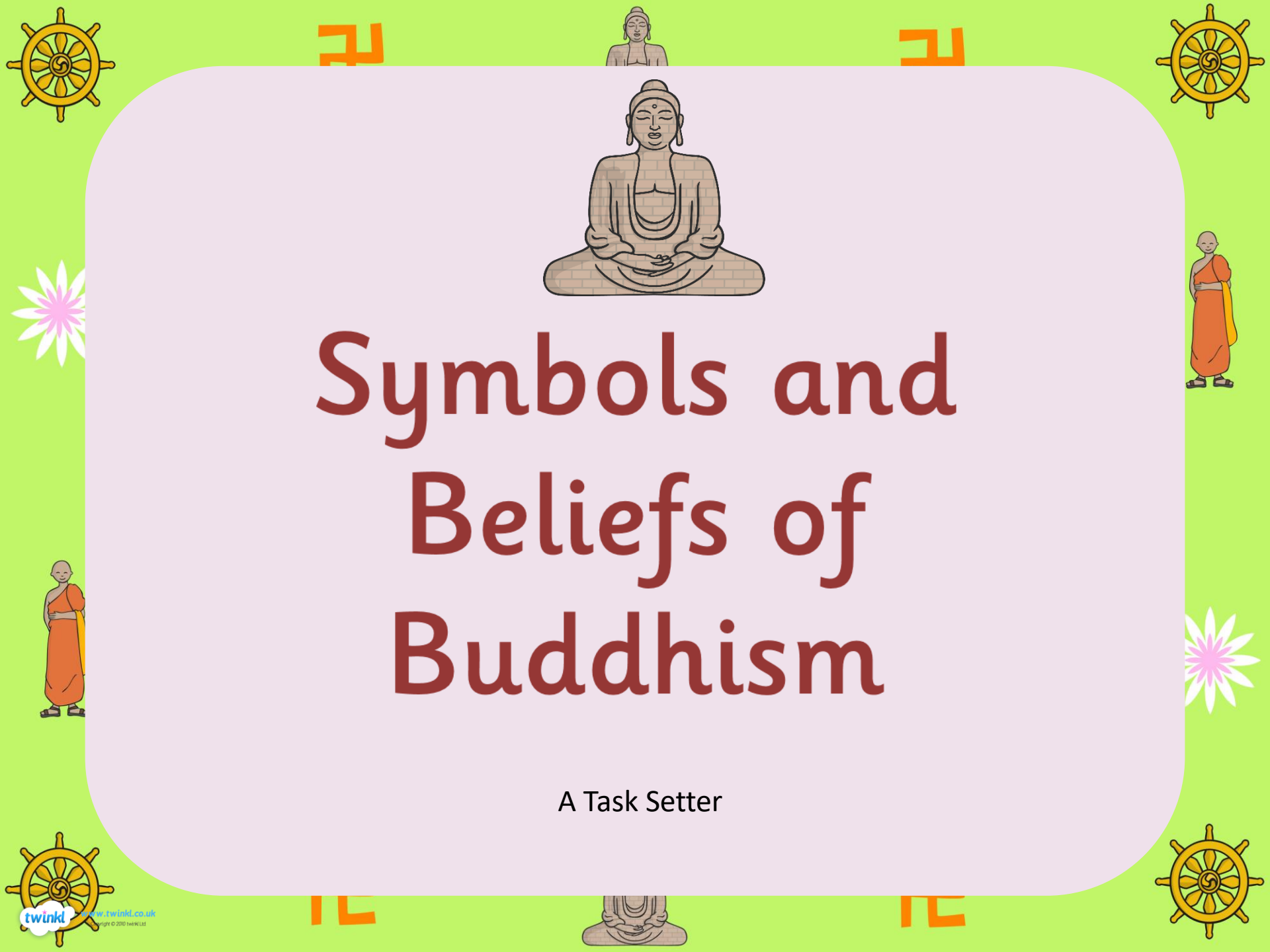




Symbols and Beliefs of Buddhism

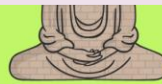
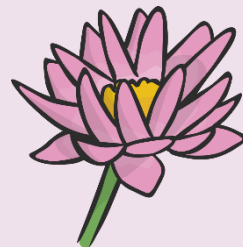
A Task Setter



The Story of Buddha

Siddhartha Guatama was a prince born in Nepal 2500 years ago. A wise man had prophesised that he would become a great spiritual leader if he ever saw someone suffer.

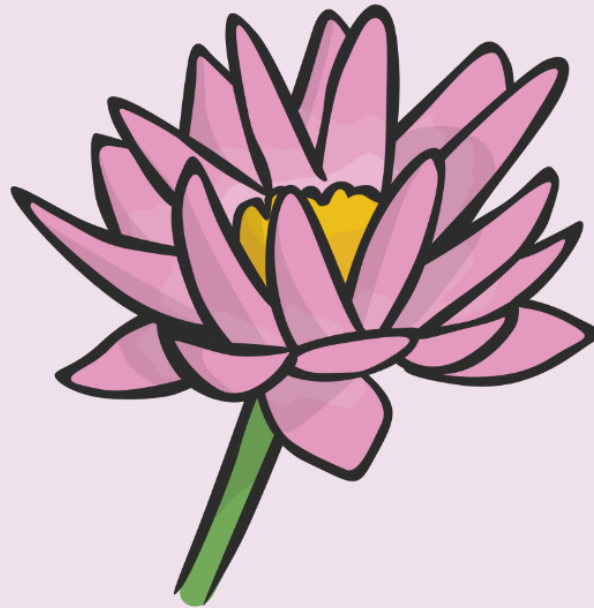
Despite his father's best efforts to prevent him from seeing any suffering, Siddhartha managed to leave the palace one day and witnessed a sick man, an old man and a dead man. He had seen suffering.



The Story of Buddha

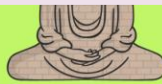
Siddhartha then went on a pilgrimage and joined a group of monks. He became very ill and eventually left the monks to meditate under a fig tree. He did this for 46 days. During this time, he was enlightened and became Buddha.





Lotus Flower

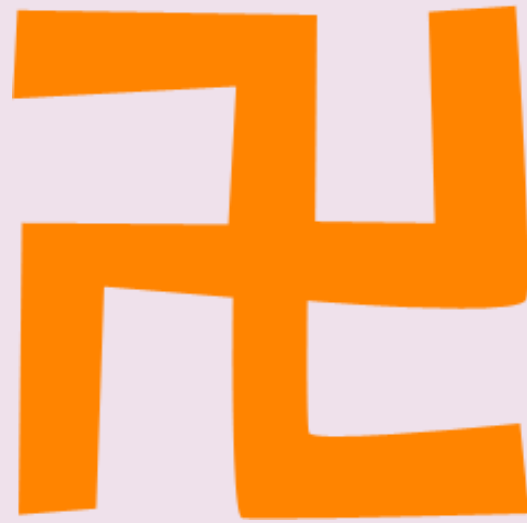
This has a meaning of **fortune and purification** in Buddhism as a lotus rises and blooms in to 'enlightenment' from dark, murky waters .





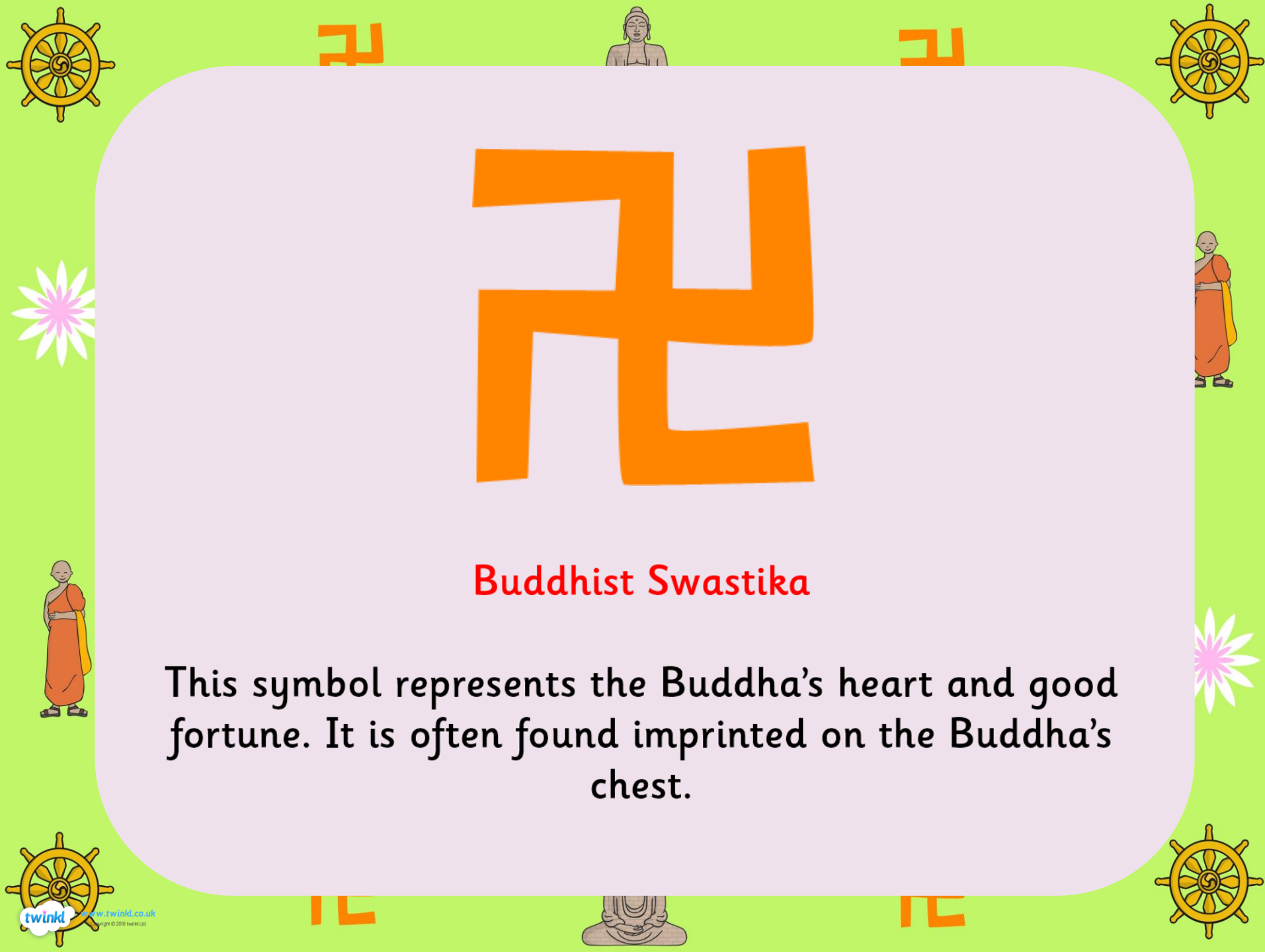
Dharma Wheel

The eight spokes of the wheel represent **'The Noble Eightfold Path'** of Buddhism. Its circular shape represents the **perfection** of the teachings of Buddhism.



Buddhist Swastika

This symbol represents the Buddha's heart and good fortune. It is often found imprinted on the Buddha's chest.





©KinberlynChan



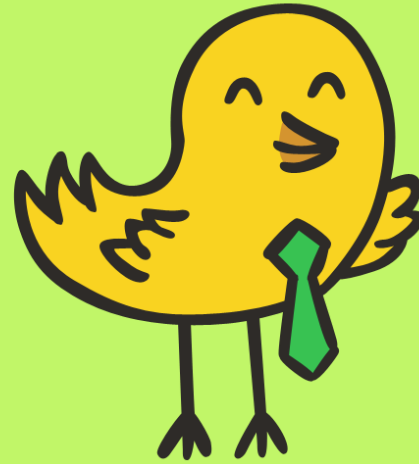
Photo courtesy of kinberlyn(@flickr.com) - granted under creative commons licence - attribution



YOUR TASK

Now complete your worksheets.





THE END

