
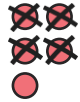








- 1) a) Complete the calculation and the sentence.

Tens	Ones	tenths
	 	

$$14 \div 10 = \square$$

When dividing by 10, we move the counters or digits one place to the \_\_\_\_\_.

- b) Complete the place value grid and the calculation.

Tens	Ones	tenths
		

$$\square \div 10 = \square$$

- 2) Draw arrows and move the digits on the place value grid to answer the calculation.

$$29 \div 10 =$$

Tens	Ones	tenths
2	9	

- 3) Find the answers.

a)  $48 \div 10 =$  \_\_\_\_\_ d)  $79 \div 10 =$  \_\_\_\_\_

b)  $55 \div 10 =$  \_\_\_\_\_ e)  $30 \div 10 =$  \_\_\_\_\_

c)  $61 \div 10 =$  \_\_\_\_\_ f)  $82 \div 10 =$  \_\_\_\_\_

- 4) Find the missing numbers.

a) \_\_\_\_\_  $\div 10 = 1.9$

b)  $8.7 =$  \_\_\_\_\_  $\div 10$



1)  $42 \div 10 = 4.2$

Convince me that this calculation is correct. Explain what would happen to the digits on a place value grid.

Tens	Ones	tenths

---

---

---

2) Do you agree or disagree with Matthew? Explain your answer.



When you divide a number by 10, the digits on a place value grid always move one place to the left.

---

---

---

3) Saba is dividing by 10. Explain and correct her mistake.

$$65 \div 10 = 0.65$$



---

---

---



1) Follow the clues to find the length of each snake.

The anaconda's length is a two-digit whole number. This number is a multiple of 4. The digits of the number add up to 3.

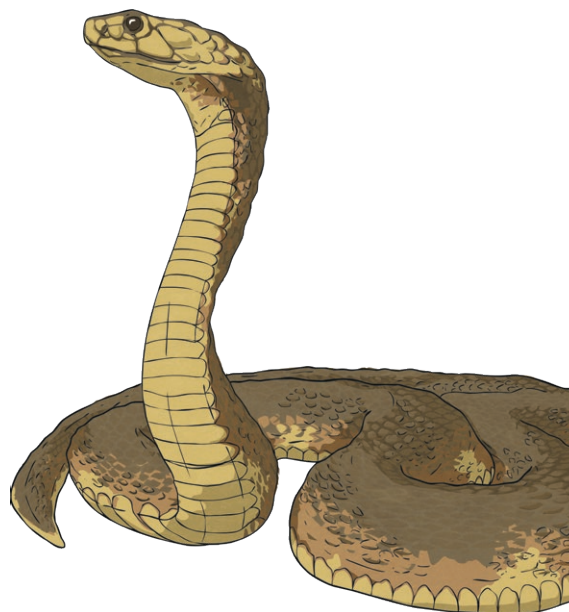
The python is half the length of the anaconda.

The rat snake is ten times shorter than the anaconda.

The corn snake is ten times shorter than the python.

What is the length of each snake in metres?

Snake	Length
anaconda	
python	
rat snake	
corn snake	



Solve the clues to identify the mystery number.

A: The number has zero hundreds.

B: When I multiply this number by 10, the answer is a whole number that is larger than 20 but smaller than 30.

C: The number has four tenths.

D: The number only has some ones and some tenths.

The mystery number is \_\_\_\_\_.

Some of the clues are extra clues. This means that you do not need to use them in order to find the answer.

Which clues are extra clues? How do you know?

---

---

---

---

---

---