

2014

stepping stones

Newsletter of the Holly Lodge Centre

www.thehollylodgecentre.org.uk



Last Minute Alert – Reserve Now Eighth annual Holly Lodge Centre Christmas Concert

St Mary Magdalene Church, Paradise Road, Richmond will again be the site of the annual Holly Lodge Centre Christmas concert at 7 pm, Tuesday, 2 December. The event will be hosted by Centre patron Adrian Mills and will feature the Sheen Gate Choir and choirs from the Sheen Mount School and the Clarendon School in Hampton as well as readings by Claire Tomalin and Tim McMullan.

Tickets at £20 (£5 for children 16 and under) support the work of the Holly Lodge Centre, a special place for learning in Richmond Park. Mince pies and wine will complete the festive evening. For reservations call 020 8940 8730 or e-mail hlcevents@thehollylodgecentre.org.uk

Adrian Mills named Centre Patron

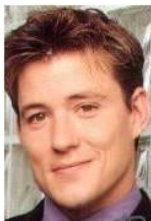
We are delighted to announce that Adrian Mills has agreed to become a patron of the Holly Lodge Centre. Adrian has long been a very active Centre supporter, notably as host of our annual Christmas concert and as the Duke of Teck at the annual Victorian tea party.

Adrian is an experienced broadcaster who was the face of the BBC consumer programme That's Life and the host of Sky Travel Programmes. He has appeared in numerous programmes including, 'Surprise' with Cilla Black, 'Bite Back' with Sue Lawley, 'Good Fortune' with Sir David Frost.

"I'm delighted to accept the position as a patron of the Centre and will continue to do everything I can to spread the word about the work of such a fantastic place."



Adrian joins a distinguished group of patrons whose support is vital to the success of the Holly Lodge Centre: HRH Princess Alexandra and, left to right, Baroness Susan Kramer, Ben Shephard, Keith Vaz MP, Mike Fitt OBE, Peter Davison, Tenors *Un Limited* (Photo of HRH by Hugo Burnand)



Merton Young Carers spend an artistic day at the Centre

Groups of young carers visit the Holly Lodge Centre regularly, taking full advantage of the nature trail, the Victorian classroom, the Victorian pharmacy and the picnic area. The visits are sometimes educational and other times just fun. In late October, young carers from Merton spent much of a day learning – well – to turn themselves into paint brushes ...



... and then enjoying story telling on the nature trail and acting out stories themselves on the stage of the picnic area.



Barnes residents attend special 'open day' at the Centre

A group of Barnes residents came to the Centre on 18 November for a special 'open day' organised by Helen Willan, the Centre's 'ambassador' in Barnes. Visits to the Victorian classroom and Victorian pharmacy as well as the kitchen garden and the nature trail gave these near neighbours an inside look at the facilities and programs offered to children and adults, many with special educational and physical needs.



Alex Mulholland, in his role as the original Sheen pharmacist, Philip Palmer, demonstrates pill-making to the rapt attention of students from St. Stephen's Primary School in Twickenham.

School groups learn about Victorian Medicine in the Centre's Pharmacy

2010 marked the opening of the Holly Lodge Centre's Victorian Pharmacy made possible through the generosity of Alex Mulholland who donated the 19th century furnishings of his pharmacy in Sheen. The pharmacy has since become a major part of the Centre's educational programmes dedicated to bringing alive the Victorian era to school groups in the Richmond Park area.

Alex and other volunteers regularly conduct sessions where children learn how diseases were treated and how various types of pills and elixirs were made in the Victorian era. Importantly, students come away with a strong sense of how medicine has evolved and changed our lives in the past 150 years. It was at that time that Philip Palmer first opened his pharmacy in Sheen and came to count as his customers the residents in and around Richmond Park, including members of the royal family.



Young students from Kingswood House School in Epsom practice pill making under the watchful eye of Victorian pharmacist, "Philip Palmer"

Events, Events and more Events

The Autumn/Winter event season has well and truly kicked off as Centre supporters gather at a variety of events and venues throughout west London. All are important sources of the private funding that makes the activities of the Holly Lodge Centre possible.

Tenors *Un* Limited at Richmond

And enthusiastic audience at the Richmond Theatre in September welcomed a concert by “the rat pack of opera”, Tenors *Un* Limited, who were joined in this special event by a talented girls’ choir from Surbiton. Classical, musical comedies and some of the Tenors own compositions were the order of the evening.

It was the kickoff of the Tenors’ Autumn tour but it was particularly special since the ‘guys’ – who are Holly Lodge Centre patrons -- donated 10% of the evening’s proceeds to the Centre. And fans at the concert contributed an additional £360.



Chiswick Gospel Choir at Ealing

“Rousing”, “Inspiring”, “Fun” – not necessarily words associated with a concert, but that’s how it was at St. Mary’s Church, Ealing, on Saturday evening, 15 November, when the Chiswick Gospel Choir presented its special musical offering including ‘Holy’, ‘Touching Jesus’ and ‘God of Promise.’ (click [here](#) for a wonderful video montage of the concert.)

In addition to the Gospel Choir itself, the audience was treated to several numbers by the talented Chiswick Junior Gospel Choir, including ‘Clap Your Hands’ (click [here](#) for a video of ‘Clap your hands’)

The Chiswick Gospel Choir is a group of Christians from the Chiswick Seventh-Day Adventist Church led by Lynda Saunders and Gillian Francis-Musanu. The choir’s music has gained them inter-denominational status and they have participated in fund raising projects for many charities across London.

The concert benefitted the Centre and resulted from the serendipitous touch of Pat Ealey who first heard the choir at St. Nicholas Church in Chiswick and, “I just knew they were exactly that match of fun and inspiration that we always seek for the groups that visit the Holly Lodge Centre.”



Tea with June Whitfield at Cannizaro House, Wimbledon

The amazing June Whitfield regaled the audience with stories spanning her years as an actress at a fundraising tea for the Centre on 10 November at the Cannizaro House Hotel in Wimbledon.

June talked of her first leading role in the radio comedy, ‘Take it from Here’ to her very recent roles in ‘Absolutely Fabulous’. She told her audience that in 2015 she will play Granny Wallon in a BBC One adaptation of Laurie Lee’s classic novel Cider with Rosie.

Everyone thoroughly enjoyed June’s wit and enthusiasm and nearly £3,000 was raised for the Centre.



Left to right Robert Scalzo, Centre trustee, Adrian Mills, Centre patron, June Whitfield, Joan Braune, Centre Trustee, Robert Holmes (Karen Hatch photo)

Four outside groups help with Centre maintenance – a Big THANK YOU to all four!



Two teams from the worldwide IT department of **GlaxoSmithKline** painted the walls and ceiling of the Victorian classroom, painted the disabled toilets and cleared out important parts of the nature trail and dipping ponds. Thankfully, they had a beautiful day and made tremendous progress.



'Team building' groups from **Mediacom**, one of the UK's biggest advertising groups, have been helping out at the Centre for several years. This autumn they, too, cleared parts of the nature trail as well as working at the Centre's bird hide at Pen Ponds Plantation. They also finished painting the foyer of the Victorian classroom.

The **American University in Richmond** encourages students to engage in community action and a group chose to help the Centre cleaning the windows of the Victorian Pharmacy and clearing the inevitable summer weeds on the nature trail.



Fifteen pupils from **Radnor House School** in Twickenham volunteered on national Make a Difference Day. They cleaned the Victorian classroom and pharmacy and worked on the nature trail, including replenishing the bird feeders.



Nature Trail Projects: New digs for our animal friends

Stewart Perkes and his team have been doing great work on the nature trail, building new facilities for our animal and bird friends and observation points for visitors.



The Hibernaculum (a man-made structure for various species to take shelter, hibernate or seek refuge) on the left, is made of old palettes filled with bricks, stones, sticks and other material to attract and protect little friends such as mice, caterpillars, frogs, newts, lizards -- even slugs.

The pit on the right has now been covered with earth on top of an old palette and a membrane. Plastic tubes bring air to the below ground accommodation. We expect to see signs of various species in the coming months



Also a new bird feeding station has proven to be a huge success. Within hours of the food going into the feeders the black sunflower was all consumed, with the other seeds not far behind. We have seen a constant flow of blue tits, goldfinches and nuthatches. These can now be watched from behind the new observation screens.

The Monday art group – more of their special magic



Want to organise a group visit to the Centre?

In just the past few weeks the Friends of Richmond Park, the Richmond Chamber of Commerce, the Wimbledon Wives and the Barnes Community Association have visited the Holly Lodge Centre.

Do you belong to a community group that ought to learn more about the activities of the Centre?

Are you a teacher who works with children with special learning needs and who would benefit from the programmes of the Centre?

How about a visit to the Centre's historic Victorian pharmacy – about to celebrate its 150th birthday.

The goal of the Centre is to be an educational resource for children and adults including those of special learning and physical needs in the communities surrounding Richmond Park. To spread the word about our work and our facilities, we welcome visits by community groups.

To organise a visit for your group, contact Dr. Pat Ealey, Community Outreach Manager by telephone 020 8940 8730 or e-mail pealey@thehollylodgecentre.org.uk

Thanks!

We rely heavily on contributions from individuals, organisations and trusts to fund our daily activities. A big **THANKS** to some recent key donors.

Richmond Parish Lands
Kaye Pemberton Trust
Normansfield and Richmond Foundation
Barnes Workhouse
Redevco Foundation
Heathrow Community Fund
Richmond Civic Trust
Kew Midsummer Fete
John Colet Singers
Friends of Radnor House School
Wimbledon Village Stables
Chapman Charitable Trust
Positive by Design created the Centre's new logo
and design manual
Deloitt's gave a reconditioned laptop computer

A bloomin' great autumn in the Centre's garden and nature trail

For the first time, we entered the 'London in Bloom' competition, 'It's Your Neighbourhood' initiative. There were over 150 entries for this category. Under Julia Hamilton's leadership, we were awarded a "4-thriving"! Quite an achievement for our first year of consideration. Congratulations to Julia and the garden group.



And we've just received word that new mini-beast hotel on the Centre's nature trail won first prize in the group section of the RHS 'Wild about gardens week' bug mansion competition. "It's a fantastic structure and the judges were highly impressed with its appearance, especially noting the roof, functionality, creativity and it's positioning."

The Centre's nature trail team has won a guided tour of RHS Garden Wisley for up to 20 people, with behind-the-scenes access to see the work of RHS Entomologists working in the garden.

Congratulations to the nature trail team – Stewart Perkes, Andrew Harvey, Bill Millar, Bill Munro and Tony Offredi.

Be a part of something special

Support the Holly Lodge Centre with a Donation

The Holly Lodge Centre provides groups of children, young people and adults, particularly those with special needs, a hands-on experience of Richmond Park and its diverse wildlife and heritage. We receive no government funding and rely on individual contributions for over 50% of our income.

You can support us with a one-off or regular (monthly, quarterly or annual) donation. Help us bring the joys of Richmond Park to those who might otherwise not be able to experience this enormous gift of nature and history.



a special place for learning

The easiest way to donate is to click on the following link to the Holly Lodge Centre page on the secure Charity Checkout site and select one of the options available. Please complete the Gift Aid declaration if you are a UK tax payer. Click here:

<https://www.charitycheckout.co.uk/1076741/Donate>

Or you can print and complete the form below and send it to:

Anna King, Centre Manager
The Holly Lodge Centre
Richmond Park, Richmond TW10 5HS

Standing order mandate -- Account to be debited

Account name	<hr/>		
Account Number	<hr/>	Sort Code	<hr/>
Bank Name	<hr/>		
Beneficiary details	The Holly Lodge Centre Barclays PLC Richmond upon Thames Sort Code 20-72-17 Account number 20565172		
Payment details	Amount of Payment	£	<hr/>
Date of First Payment	<hr/> / <hr/> / <hr/>		
Amount in words	<hr/>		
Frequency of payment (monthly, quarterly, annual)	<hr/>		
Signature	<hr/>		
	Date	<hr/> / <hr/> / <hr/>	

Links You Can Use



The Holly Lodge Centre	http://www.thehollylodgecentre.org.uk/
Donate to the Holly Lodge Centre	https://www.charitycheckout.co.uk/1076741/Donate
The Friends of Richmond Park	http://www.frp.org.uk/
The Royal Parks	http://www.royalparks.org.uk/

We encourage your input about this newsletter as well as about the Holly Lodge Centre itself. Please e-mail us at jbraune@thehollylodgecentre.org.uk. Also if you know of others who would want to know more about the Centre, please forward this newsletter to them or send us their e-mail addresses so that we can add them to our newsletter list. Thank you.